

ATMOS® LED Light Cube

# High-Power-LEDs

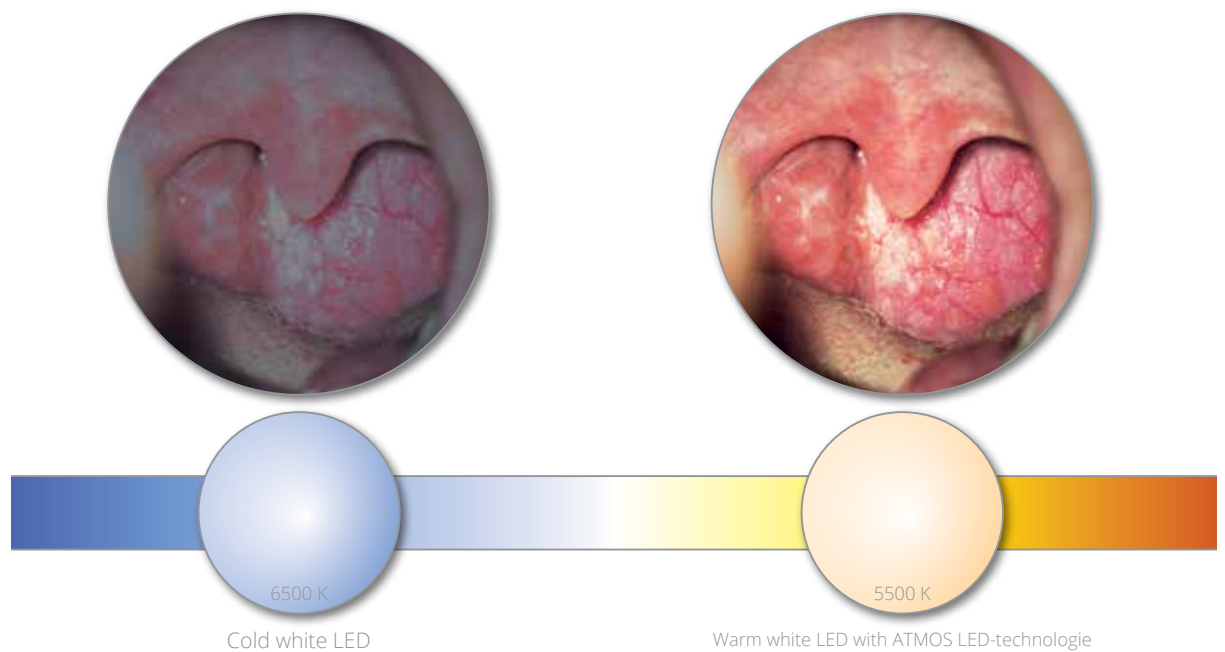


## ATMOS® LED Light Cube

High-Power-LEDs in daylight quality (5.500 K ± 10 %)!

In many cases you do not have all your instruments integrated in your examination unit. This leads to awkward handling of the individual instruments. For this problem ATMOS now offers a solution: the new ATMOS® LED Light Cube. As a tabletop device it can be placed on your unit at any time.

Due to the latest LED-technology it offers an impressive light source in daylight quality. Judge for yourself the excellent light performance of the ATMOS LED-technology (comparable to 250 W halogen).



### Ordering information

ATMOS® LED Light Cube	REF
ATMOS® LED Light Cube	541.2100.0
Accessories ATMOS® LED Light Cube	
Adapter for light conductors with ATMOS / Storz connection	530.6100.0
Adapter for light conductors with Olympus connection	530.6101.0
Adapter for light conductors with Pentax connection	530.6102.0
Adapter for light conductors with Wolf connection	530.6103.0
Adapter for light conductors with ACMI connection	530.6104.0
Set of adapters for light conductors	530.6105.0

## The specific characteristics:

### High-Power-LEDs

Daylight quality and an outstanding light intensity of min. 195 kLux (comparable to 250 W halogen) due to the specially developed optimised lighting system. Patent pending!



### Energy-efficient

The ATMOS® LED Light Cube achieves more light intensity than 150 watt halogen by only 9 watt electric power!

### No more bulb exchange...

...due to the extremely long service life of the high-power LEDs (50,000 h).

No disturbing fan noises...  
...due to passive cooling.

Automatic control of the light channels  
When the respective optic is removed, the light source switches on automatically. Optionally the manual control via a switch is also possible.

Flexible adapter system  
Applicable on all common makes (ATMOS/Storz, Wolf, Olympus, Pentax, ACMI).





**MedizinTechnik**

ATMOS MedizinTechnik GmbH & Co. KG

Ludwig-Kegel-Str. 16

79853 Lenzkirch / Germany

Tel: +49 7653 689-374

atmos@atmosmed.de

[www.atmosmed.com](http://www.atmosmed.com)